

Europe

Key Vocabulary:

Biomes
Vegetation belts
Bank
Basin
Canal
Confluence
Current
Erosion
Estuary
Meander
Oxbow lake

English:

Newspaper reports

Non-Chronological reports

Rainbow Grammar

Prepositions and adverbials of duration (when)- How they can be used at the beginning of sentences too.

Determiners

Apostrophes for possession
Direct and reported speech

Spelling

Spell words containing sol and real, phon and sign

Revise and learn the spelling rules for adverbs of manner.

Spell homophones and near homophones and learn words which don't fit with general spelling rules.

Maths:

Measurement

- Solve two step word problems involving money.
- Solve problems involving converting from hours to minutes; minutes to seconds; years to months; weeks to days

Geometry- Position and direction

- Describe positions on a 2-D grid as coordinates in the first quadrant
- Plot specified points and draw sides to complete a given polygon.

Number- Fractions (including decimals)

- Recognise and show, using diagrams, families of common equivalent fractions
- Count up and down in hundredths
- Recognise and write decimal equivalents of any number of tenths or hundredths
- Solve simple measure and money problems involving fractions and decimals to two decimal places

Addition, subtraction, multiplication & division

- Estimate and use inverse operations to check answers to a calculation
- Multiply two-digit and three-digit numbers by a one-digit number using formal written layout
- Use short division
- Recall multiplication and division facts for multiplication tables up to 12×12

Statistics

- Interpret and present discrete and continuous data using appropriate graphical methods, including bar charts and time graphs.
- Solve comparison, sum and difference problems using information presented in bar charts, pictograms, tables and other graphs.

Science:

Living Things and their Habitats (2)

- Look at how environments can change and how this affects living things.
- Look at natural and man-made changes to environments and think about how living things might adapt to these changes.
- Understand what climate change is and investigate the greenhouse effect.
- Think about how we can make positive changes to the environment.

Home learning ideas:

- Explore your local area and identify its physical and human characteristics.
- Choose a famous building in Europe and create a model of it.
- Read the first chapter of 'Wind in the willows'. What does this chapter teach you about river life?
- Using household and garden items, create your own river with water.
- Research the 5 largest cities in Europe and create a fact file for each.
- Using local maps, identify physical features that can be found in Nottinghamshire and Lincolnshire.

Key questions for this area of learning:

What is an environmental region?

What are human and physical characteristics of a place?

Can I locate major cities in Europe and Russia?

What is a capital city?



RE

- Consider why people go on pilgrimages. Make some connections between journeys to Varanasi for Hindus, Hajj for Muslims and pilgrimage to Lourdes, Iona or the 'Holy Land' for Christians, describing the motives people have for making spiritual journeys.
- Suggest how and why belonging to a community and expressing spirituality in, for example, the memories, stories, music, rituals, emotions and experiences of pilgrimages might be valuable to Hindus, Muslims or Christians

RSHE:

- I understand what prejudice is and how this can impact on individuals/communities
- I accept others for who they are and respect their rights
- I understand the right to freedom of expression
- I appreciate the range of national, regional, religious and ethnic identities in the UK
- I can investigate the importance and influence of immigration
- I know that some marriages are arranged by family members in some cultures/faiths

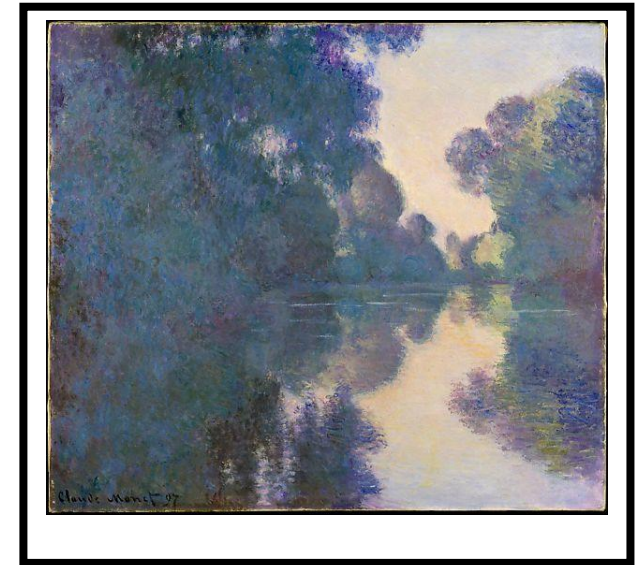
Computing:

Data Logging

- Consider how and why data is collected over time
- Use data logging technology
- Think about the senses used by humans to gauge the environment and how a computer uses sensors to collect data
- Access and collect data over long periods of time
- Review and analyse data

Geography

- Use maps to locate the countries and major cities of Europe and Russia
- Identify European environmental regions
- Identify key physical and human characteristics of Europe
- Understand human and physical geographical similarities and differences through the study of a region within Europe
- Use the eight points of a compass.
- Use four -figure grid references.



D&T:

- Know where and how a variety of ingredients are grown, reared, caught and processed
- Understand and apply the principles of a healthy and varied diet
- Prepare and cook a variety of predominantly savoury dishes using a range of cooking techniques
- Follow safe procedures for food safety and hygiene

PE:

Tennis:

- Keep a rally going using a range of shots
- Hit the ball accurately towards a target
- Apply basic principles suitable for attacking
- Find and use space in a game situation

Orienteering

- Learn the importance of key skills in orienteering: agility, balance and coordination
- To use navigation points and recognise where they are on a map
- Understand and create maps
- Work as part of a team

French:

- To learn how to ask and answer the question, 'where do you live?'
- To learn the names in French for rooms in the home

