

Key Vocabulary:

Roots Stems
Leaves flowers
Gardens trunk

Plants
Wild Flowers
Garden plants
Birds
Deciduous trees
Evergreen trees
Human features
Physical features
Location
Village Town
Maps Features
Symbols Key
Newark Skegness

In the Garden



Science:

- To know what a plant is.
- To identify the basic structure of common flowering plants and trees.
- To name common wild flowers.
- To name common garden plants.
- To recognise deciduous and evergreen trees.
- To identify common garden birds.

Key questions for this area of learning:

- What function do different parts of a plant have?
- How do plants grow?
- What is the difference between a town and a village?

Home learning ideas:

- What is growing in your garden?
- What birds can you see in your garden?
- What wild flowers can you see in your local area?
- Do you live in a town or a village? How do you know?

Maths:

Multiplication:

To counting in 2's, 5's and 10's
To compare and count in different amounts

Addition and Subtraction

To identify related facts
To use related facts for addition
To use related facts for subtraction

Subtraction

To recap subtraction as taking away
Subtraction as finding the difference

Measure: Mass and weight

To use the language of heavy and light
To use the language of heavier and lighter
To measure and compare weight
To measure using non-standard units.

Fractions

Problem solving using halving and quartering

Division

To identify division as grouping
To identify division as sharing

English:

Garden Stories

Oliver's Vegetables

To spell the days of the week

To re-tell the story

To write a character description

To write my own version of the story

The Gigantic Turnip

To re-tell the story

To write my own version of the story

The Tiny Seed –

to write a fact file about a plant

Rainbow Grammar

Using the conjunction 'but'

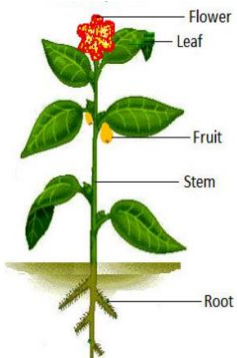
Using the prefix –un

Using the conjunction 'because'

Visits, visitors or key events:

A village walk to identify plants and flowers in North Muskham.

28th April – Victorians trip to Lincolnshire Life Museum.



Art and Design/Design Technology:

Printing

- Bark rubbings – using different textures in nature.
- Use rubbings as a collage
- Leaf prints

Wheels and Axles

- To investigate how wheeled vehicles move
- To investigate wheels and chassis
- To design a pull along bug/ insect
- To make pull along toy

PSHE:

Living in the Wider World

- Our local environment - what improves and harms our natural environment and built environment
- Different ways that others can look after the local environment
- Different ways we can look after our local environment
- What is recycling? How does this help the environment?
- Describe and celebrate personal strengths and set simple, but challenging goals



Music:

Animals

Focus: Pitch

Children to understand pitch through, using movement, voice and instruments. They identify contrasts of high and low pitches and create animal chants and sequences.

Our School

Focus: Exploring Sounds

Children explore sounds found in school environment. Investigate ways to produce and record sounds. Using ICT to stimulate musical ideas related to geography.

Geography:

- To know the internal geography of the school
- To know the external geography of the school
- To know the geography of the surrounding area
- To know the difference between North Muskham and Newark
- To know the difference between Newark and Skegness

PE:

- Athletics
- Cricket

Religious Education:

- To recognise differences between a church and a synagogue
- To understand the artefacts and symbols in a synagogue
- To recognise the Star of David as a Jewish symbol
- To learn about common symbols between religions
- To recognise artefacts from different religions

ICT:

Creating Media- Digital Writing

To use a computer program to write

To add and remove text on a computer

To identify that the look of a text can be changed on a computer and to make careful choices when changing the text

To explain why I used the tools I chose

To compare typing on a computer to writing on paper