

Key Vocabulary:

Life-cycle
Plant
Flower
Growing
Chicks
Soil
Gardener
Easter
Cocoon
Adult

Words of the Week:

Seek, enormous, identify, cycle, trace, individual

Growing

Literacy:

- Story mapping
- Correct formation of letters
- Use phonic knowledge to write unfamiliar words
- Spell 'harder to read and write' words
- Writing elements from a story
- Write a sentence - use finger spaces, capital letters and full stops
- Writing instructions
- Writing in cards
- Writing a menu
- Inventing stories

Talk for writing texts: *The Hungry Caterpillar, Jack and The Beanstalk and The Growing story*

Understanding the World:

- The meaning of Easter
- What can we grow in the garden?
- Exploring life-cycles
- How animals and humans change from birth to adult
- Looking closely at patterns in the natural world and change in plants, animals and humans
- Creating maps
- Signs of spring

Communication and Language:

Speaking and listening. Modelling sounds and language.

- Extend vocabulary
- Taking turns to talk
- Anticipate key events within a story
- Sharing ideas and opinions
- Role-playing stories - small world and Garden Centre Role-play

Phonics:

We will be continuing with **Phase 3 digraphs and trigraphs** and how multiple letters make only one sound. We will also be securing the previous sounds we have learnt.

We will be practising recognising and spelling Harder to read and spell words (HRSW) including:

Week 1: said, so, have,

Week 2: were, out, like

Week 3: some, come, there

Week 4: little, one, do

Week 5: children, love

Week 6: Revision of all taught HRSWs.

Home learning ideas:

- Share books together
- Spot graphemes in the environment
- Practice writing tricky words
- Designing Easter eggs
- Garden plant investigations
- Insect spotting
- Grow your own flowers
- Look at baby photos and discuss how you have changed

Visits, visitors or key events:

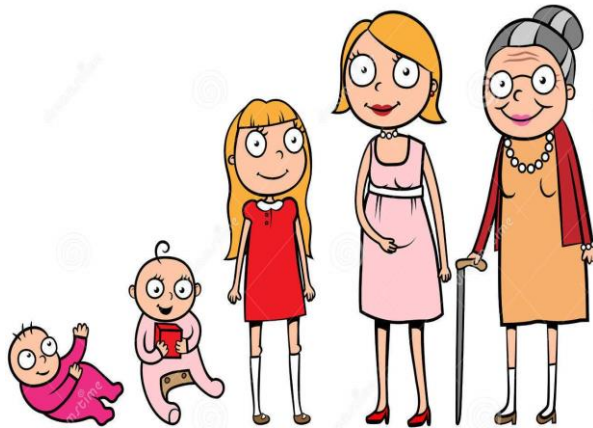
- World Book Day
- Mother's Day
- Red Nose Day
- Easter Egg Hunt
- Science Day





Key questions for this area of learning:

- What happens at Easter?
- What does a flower need to grow?
- What does a baby animal change into as it grows into an adult?
- How must we care for living things?



Personal, Social and Emotional Development:

Keeping Safe

Personal Safety Plan

Understand the importance of following my school's safety plan

Listen to and follow the instructions given to me by a trusted adult

Wear a cycle helmet when riding my bike or scooter

Water Safety

Know how to have fun in and around water whilst staying safe

Healthy Bodies and Minds

Importance of oral hygiene and exercise

Expressive Arts and Design:

- Observational drawings of spring flowers
- Explore and use methods of printing
- Create a card with a 'flap' element
- Create a card with a sewing element
- Design an Easter Egg using repeating patterns
- Singing Easter songs

Physical:

- Pencil control and forming of letters and numbers continued
- Play dough: Developing fine motor skills by squeezing, patting, prodding, pulling and using our fingers in to manipulate the dough
- Using small equipment and tools safely and accurately e.g scissors and hole-punches

PE Focus - Movement Development

- How to move safely
- Moving in different ways
- Moving in different directions and different speeds
- Travel with confidence and skill around, under, over and through balancing and climbing equipment



Mathematics:

- Numbers 1 - 20
- Ordering numbers
- Counting beyond 20
- Counting forwards and backwards
- More and less
- Number bonds to 8, 9, 10
- Measurement - Use the language of capacity and size